

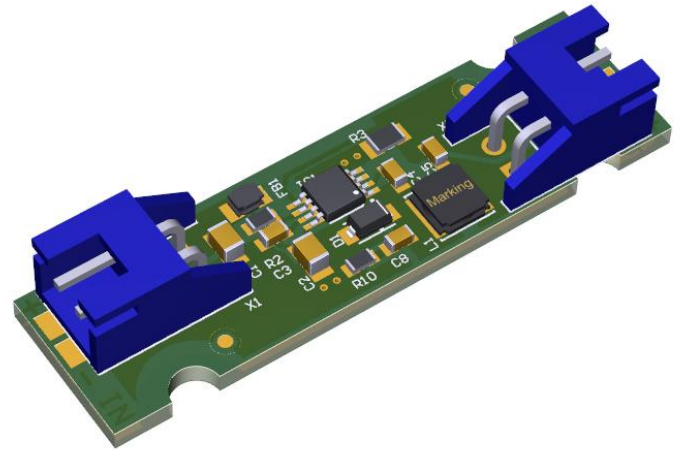
# SMA-Valve Driver 7100319311

Driver to control the SMV valves

Multiple valves can be controlled in series

Connection using the JST XHP-2 connector

Dimensions 12.00 x 43.50 mm



## Specifications:

Vin: 12 - 24 V nominal

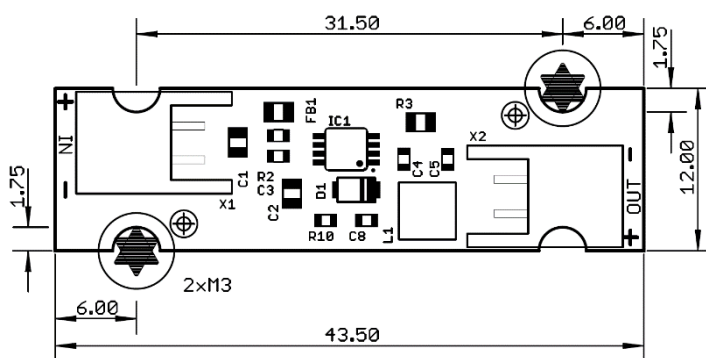
Iout: 250mA ( $\pm 10\%$ ) - Driver is current controlled

Vout nom.: 0.6V @ 250 mA

Vout max. : @ 12 Vin: 7.3 V

Vout max. : @ 24 Vin: 12 V

## Dimensions:



*Customer-specific solutions for the individual control of SMA valves are possible.*



BMT Fluid Control Solutions GmbH  
Maßbornstraße 54f – D-60437 Frankfurt a. M.  
Tel.: +49 6101 95400-30 – Fax: +49 6101 95400-39

info@pumpen-ventile.de – [www.pumpen-ventile.de](http://www.pumpen-ventile.de)

Technische Änderungen Vorbehalten

2020-05

